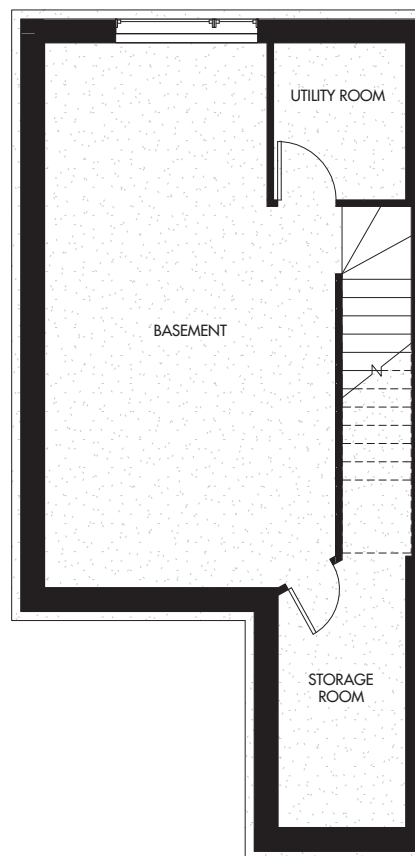


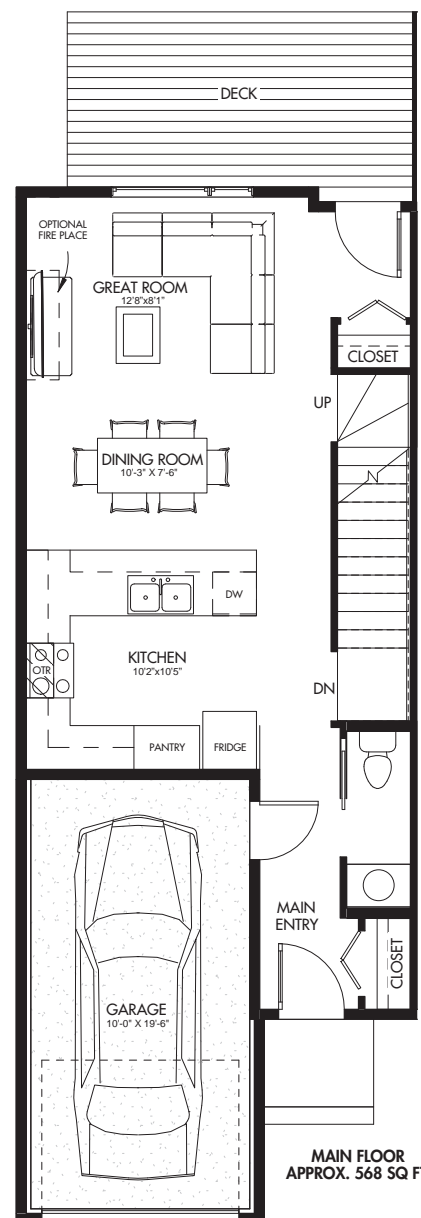


- Open Concept
- 3 Bedrooms
- 2.5 Bathrooms
- Master Ensuite
- Walk-in Closet
- Spacious Deck
- Single Car Garage

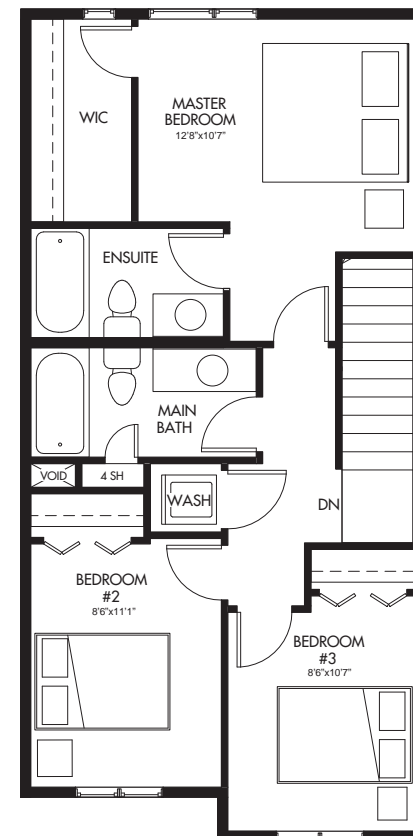
TOTAL 1193 SQ. FT



BASEMENT FLOOR
APPROX 493 SQ FT UNDEVELOPED



MAIN FLOOR
APPROX. 568 SQ FT



UPPER FLOOR
APPROX. 625 SQ FT




ROCKFORD


walden

Axis
403-369-6216
AXISEVERYTHING.COM

*Not to scale. E&OE. Rendering not exactly as shown. Subject to change without notice.



Axis

403-369-6216

AXISEVERYTHING.COM

Choose from three different Axis floorplans. Each plan offers something unique in terms of comfort, design, and lifestyle. All three include an attached garage, a spacious deck, and access to generous areas of green space to enjoy whenever you please. Axis's townhomes range from 1193 square feet to 1482 square feet. All three floorplans include 3 bedrooms and 2.5 bathrooms. The large master bedroom includes a private ensuite and a great walk-in closet.



FLOOR PLAN



FLOOR PLAN



FLOOR PLAN



*Not to scale. E&OE. Rendering not exactly as shown. Subject to change without notice.